




Suppliers of Equipment to the Energy Industry in the Past, Present and Future



SHEAR VALVE
FLEXIBLE CONNECTOR
OVERFILL PREVENTION VALVE
TANK FLANGE ASSEMBLY
FILL/VENT ISOLATION FITTING
UPFLOW VENT
DRY BREAK ADAPTOR
SPILL CONTAINMENT BOX
SOLID BUSH

DEF/AdBlue Equipment

Shipman King has the complete range of equipment for your DEF/AdBlue installation.





DEF/AdBlue Double Poppet Shear Valve



The Emco Wheaton Stainless Steel Double Poppet Shear Valve is used for E85, DEF/AdBlue and Ultra Low Sulphur Diesel applications. The valve incorporates a replaceable shear valve section and a heat sensitive fusible link assembly. The valve can be manually operated to facilitate dispenser maintenance and incorporates a 3/8" test port.

The closing poppet assembly is positioned out of the fuel flow path to minimize pressure drop.

Product Code	Description
EWA0060-026S	25mm (1") x 38mm (1 1/2") Stainless Steel Shear Valve

DEF/AdBlue Flexible Connector



The DEF/AdBlue Flexible Connectors are an all-Stainless Steel Braided flexible with welded stainless steel threaded fittings each end. One end is a fixed male BSP supplied with a stainless-steel elbow, whilst the other end is supplied as a swivel male fitting.

Product Code	Description
T-TEL25/12ADB	25mm (1") x 300mm (12") long Stainless-Steel Connector
T-TEL38/12ADB	38mm (1 1/2") x 300mm (12") long Stainless-Steel Connector

DEF/AdBlue Overfill Prevention Valve Assembly



The Madic Stainless Steel Overfill Prevention Valve has been tailored to suit the Shipman King Stainless Steel Fill/Vent Isolation Fitting. The Overfill Valve has a stainless-steel body with a high-density polyethylene float. The assembly can be removed from the Isolation fitting so the tank and fill line can be tested separately.

Product Code	Description
F-ADBOFVA	Stainless Steel Overfill Prevention Valve Assembly
F-ADBOV	Stainless Steel Overfill Prevention Valve Only

NEED ASSISTANCE WITH THESE PRODUCTS?

call our office and we will connect you with a team member who can help. 03 9459 9900

www.shipmanking.com.au



DEF/AdBlue Tank Flange Assembly



The Tank Flange Assembly is designed to bolt onto the top of the DEF/AdBlue underground storage tank and connect with the DEF/AdBlue submersible pump installed below. A cable access port and pressure gauge on the Tank Flange Assembly allows the submersible pump to be wired and pressure tested.

Product Code	Description
F-ADBFASS	DEF/AdBlue Tank Flange Assembly
F-ADBFL6	150mm (6") Stainless Steel Screwed Male Flange
SPSSTESCF2	50mm (2") Stainless Steel Table E Screwed Flange

DEF/AdBlue Eskay Fill/Vent Isolation Fitting



The DEF/AdBlue Eskay Fill/Vent Isolation Fitting is manufactured out of stainless fittings that can be configured differently depending on the socket size on the underground storage tank or pipework being used. Unique to the Eskay fitting is the internally threaded 75mm (3") stainless steel nipple which allows the Overfill Prevention valve to be removed and the tank and fill or vent line tested independently of each other.

Product Code	Description
F-ADBFVF	Stainless Steel Fill/Vent Isolation Fitting

DEF/AdBlue Upflow Vent



The Shipman King DEF/AdBlue Upflow Vent is our standard Upflow Vent coated with Tefzel to stop the DEF/AdBlue vapours from attacking the aluminium casting.

The Upflow Vent is designed to discharge the Vapour outwards and upwards and to keep water from entering the vent pipe

Product Code	Description
F-AV2ADB	50mm (2") Adblue Upflow Vent

NEED ASSISTANCE WITH THESE PRODUCTS?

call our office and we will connect you with a team member who can help. 03 9459 9900

www.shipmanking.com.au



DEF/AdBlue Dry Break Adaptor

The DEF/AdBlue Dry Break Adaptor is used at the filling point inside the Spill Containment Box. Made from 316 Stainless-Steel, the valve opens and closes automatically on connection and disconnection with the fill hose to avoid vapours escaping.

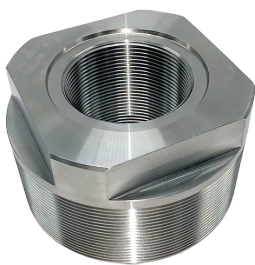
Product Code	Description
F-DBASS50	50mm (2") Stainless Steel Dry Break Adaptor/Coupling



DEF/AdBlue Spill Containment Box

The Shipman King DEF/AdBlue Spill Containment Box has all the features of our standard Spill Box but with a Stainless-Steel inner sump and fittings

Product Code	Description
MBXBSS-1ADB	Single Point AdBlue Spill Containment Box
SPBXV-SS	Stainless Steel Spill Box Valve
SPBXFCT-ADB	600mm Long Stainless Steel Spill Box Flexible Connecting Tube
SPBXSSE50	50mm (2") Stainless Steel Elbow with welded 25mm socket



DEF/AdBlue Solid Bush

The 100mm x 50mm Stainless Steel Solid Bush is used when installing a 50mm Stainless Dip Pipe. The Dip Pipe that goes inside the underground storage tank can be screwed into the bottom of the solid bush and the riser pipe up to ground level can be screwed into the top of the solid bush.

Product Code	Description
F-SB100SS	100mm (4") x 50mm (2") Stainless Steel Solid Bush

NEED ASSISTANCE WITH THESE PRODUCTS?

call our office and we will connect you with a team member who can help. 03 9459 9900

www.shipmanking.com.au