

# Red Thread™ IIA Primary Fittings

(Product Data)



## 90° and 45° Elbow, Flange and Tee

Pipe Size		A		B		C		D		E		F		O		X <sub>1</sub> <sup>(1)</sup>		X <sub>2</sub> <sup>(1)</sup>	
in	mm	in	mm	in	mm	in	mm	in	mm	in	mm	in	mm	in	mm	in	mm	in	mm
2	50	3 3/8	86	2 1/4	57	3/4	19	4 3/4	121	3/4 D-4 Holes	19 D-4 Holes	2 5/8	67	6	152	1 3/8	35	1 1/2	38
3	80	4 5/8	117	2 5/8	67	1 3/8	35	6	152	3/4 D-4 Holes	19 D-4 Holes	3 3/4	95	7 1/2	191	1 5/8	41	1 7/8	48
4	100	5 1/8	130	2 5/8	67	1 3/8	35	7 1/2	191	3/4 D-4 Holes	19 D-4 Holes	3 7/8	98	9	229	1 1/2	38	1 7/8	48

<sup>(1)</sup>X dimension is a nominal makeup dimension for layout only. Do not use for assembly dimensions.

### 90° Elbow

(Belled Ends)

Part	Part Number
2" 90° Elbow	012020-360-4
3" 90° Elbow	012030-360-4
4" 90° Elbow	012040-360-4

### 45° Elbow

(Belled Ends)

Part	Part Number
2" 45° Elbow	012020-310-4
3" 45° Elbow	012030-310-4
4" 45° Elbow	012040-310-4

### Flange

(Belled Ends)

Part	Part Number
2" Flange	012020-170-4
3" Flange	012030-170-4
4" Flange	012040-170-4

### Tee

(Belled Ends)

Part	Part Number
2" Tee	012020-410-4
3" Tee	012030-410-4
4" Tee	012040-410-4

## Sleeve Coupling, End Cap and Nipple

Pipe Size		Sleeve Coupling				End Cap				Nipple (Overall Length "A")				
		A		X <sub>1</sub> <sup>(1)</sup>		A		X <sub>1</sub> <sup>(1)</sup>		4"	6"	8"	10"	12"
in	mm	in	mm	in	mm	in	mm	in	mm	102 mm	152 mm	203 mm	254 mm	305 mm
2	50	6	152	2 1/8	54	2 3/4	70	1 3/8	35	†	†	†	†	†
3	80	6	152	2 3/8	60	3 1/4	83	1 3/4	44	-	†	†	†	†
4	100	7	178	2 7/8	73	3 3/4	95	1 5/8	41	-	†	†	†	†

<sup>(1)</sup>X dimension is a nominal makeup dimension for layout only. Do not use for assembly dimensions.

† Available from stock.

### Sleeve Coupling

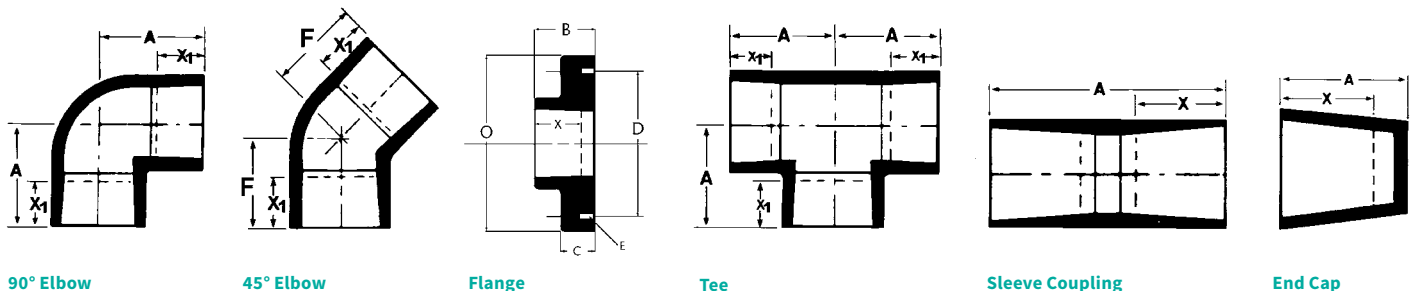
(Belled Ends)

Part	Part Number
2" Sleeve Coupling	012020-101-8
3" Sleeve Coupling	012030-101-8
4" Sleeve Coupling	012040-101-4

### End Cap

Part	Part Number
2" End Cap	012020-180-4
3" End Cap	012030-180-4
4" End Cap	012040-180-4

View of Fitting Illustrations



## Threaded Adapter<sup>(2)</sup> - NPT Thread

Pipe Size		Bell x Male						Spigot x Male				Bell x Female				Spigot x Female			
		A		B		X <sub>1</sub> <sup>(1)</sup>		A		B		A		X <sub>1</sub> <sup>(1)</sup>		A		B	
in	mm	in	mm	in	mm	in	mm	in	mm	in	mm	in	mm	in	mm	in	mm	in	mm
2	50	4 ¼	108	2	51	1 ¾	35	3 ⅝	92	2	51	3 ½	89	1 ¾	35	3 ⅞	98	2 ⅛	54
3	80	5 ½	140	3	76	1 ⅝	41	4 ⅝	117	3	76	4 ½	114	1 ⅝	41	4 ¾	121	3 ⅛	79
4	100	5 ½	140	4	102	1 ½	38	4 ⅞	124	4	102	4 ½	114	1 ½	38	4 ⅞	124	4 ⅛	105

<sup>(1)</sup>X dimension is a nominal makeup dimension for layout only. Do not use for assembly dimensions.

### Bell x Male (BxM)

Part	Part Number
2" BxM	012020-191-4
3" BxM	012030-191-4
4" BxM	012040-191-4

### Bell x Female (BxF)

Part	Part Number
2" BxF	012020-194-4
3" BxF	012030-194-4
4" BxF	012040-194-4

### Spigot x Male (SxM)

Part	Part Number
2" SxM	012020-192-4
3" SxM	012030-192-4
4" SxM	012040-192-4

### Spigot x Female (SxF)

Part	Part Number
2" SxF	012020-195-4
3" SxF	012030-195-4
4" SxF	012040-195-4

## Reducer Bushing

Pipe Size		A		X <sup>(1)</sup>	
in	mm	in	mm	in	mm
2 x 1	50 x 25	1 ¾	44	*	*
2 x 1 ¼	50 x 32	2	51	*	*
2 x 1 ½	50 x 40	1 ¾	44	*	*
3 x 2	80 x 50	2 ¼	57	1 ½	38
4 x 3	100 x 80	2 ¾	60	1 ⅞	48

<sup>(1)</sup>X dimension is a nominal makeup dimension for layout only. Do not use for assembly dimensions.

\* Also available with British Standard Threads. Specify when ordering.

Part	Part Number
2" x 1" Female NPT	012020-233-4
2" x 1 ¼" Female NPT	012020-232-4
2" x 1 ½" Female NPT	012020-231-4
3" x 2" Red. Bushing	012030-231-4
4" x 3" Red. Bushing	012040-231-4

## Saddle

Pipe Size		A		B		X <sup>(1)</sup>	
in	mm	in	mm	in	mm	in	mm
2 x 1 ½	50 x 40	2 ⅞	73	4	102	1	25

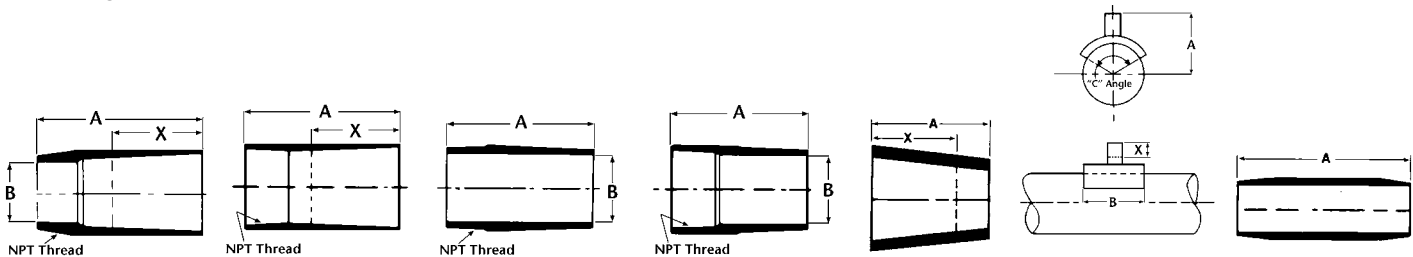
Part	Part Number
2" x 1 ½" Female NPT	012020-516-4

## Nipple

Part	Part Number
2" x 4"	012020-004-5
2" x 6"	012020-006-5
2" x 8"	012020-008-5
2" x 10"	012020-010-5
2" x 12"	012020-012-5
3" x 6"	012030-006-5
3" x 8"	012030-008-5
3" x 10"	012030-010-5
3" x 12"	012030-012-5

Part	Part Number
4" x 6"	012040-006-4
4" x 8"	012040-008-4
4" x 10"	012040-010-4
4" x 12"	012040-012-4

### View of Fitting Illustrations



Threaded Adapter - BxM

Threaded Adapter - BxF

Threaded Adapter - SxM

Threaded Adapter - SxF

Reducer Bushing

Saddles

Nipple

# Secondary Containment Fittings

## 90°, 45° Elbow, Tee, Sleeve Coupling, Termination Fitting

Pipe Size		A		B		C		D		E		F		G	
in	mm	in	mm	in	mm	in	mm	in	mm	in	mm	in	mm	in	mm
3	80	6	152	7	178	14	356	3	76	2 1/2	64	2 1/2	64	8	203
4	100	7 1/2	191	8	203	14	356	3	76	3	76	2 1/2	64	8 1/2	216
6	150	8	203	9	229	16	406	4	102	4	102	3	76	11	279

### 90° Elbow

Part	Part Number
3" 90° SC Elbow	012030-360-3
4" 90° SC Elbow	012040-360-3
6" 90° SC Elbow	012060-360-9

### 45° Elbow

Part	Part Number
3" 45° SC Elbow	012030-310-3
4" 45° SC Elbow	012040-310-3
6" 45° SC Elbow	012060-310-9

### Tee

Part	Part Number
3" SC Tee	012030-410-3
4" SC Tee	012040-410-3
6" SC Tee	012060-410-9

### Sleeve Coupling

Part	Part Number
3" SC Sleeve Coupling	012030-101-3
4" SC Sleeve Coupling	012040-101-3
6" SC Sleeve Coupling	012060-101-9

### Termination Fitting

(with NPT TAP)

Part	Part Number
3" x 2" WITH 3/4 NPT Tap	012030-236-3
4" x 3" WITH 3/4 NPT Tap	012040-236-3
6" x 4" WITH 3/4 NPT Tap	012060-234-7

### Termination Fitting

(without TAP)

Part	Part Number
3" x 2" Without Tap	012030-235-3
4" x 3" Without Tap	012040-235-3
6" x 4" Without Tap	012060-235-9

### Sleeve Coupling

(One-piece, scarfed O.D.)

Pipe Size		A		X <sup>(1)</sup>	
in	mm	in	mm	in	mm
2	50	5	127	2 1/8	54
3	80	6	152	2 3/8	60
4	100	6	152	2 7/8	73

Part	Part Number
2" SC Sleeve Coupling	012020-101-9
3" SC Sleeve Coupling	012030-101-9
4" SC Sleeve Coupling	012040-101-9

### Threaded Adapter

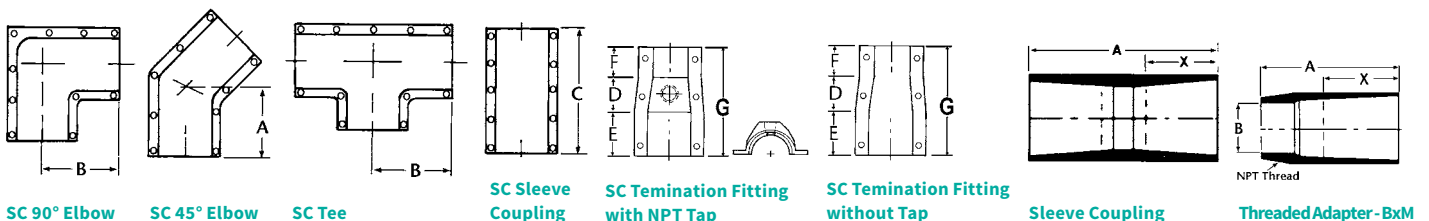
(Bell x Male, scarfed O.D.)

Pipe Size		A		B		X <sup>(1)</sup>	
in	mm	in	mm	in	mm	in	mm
2	50	4 1/4	108	2	51	1 3/8	35
3	80	5 1/2	140	3	76	1 5/8	41
4	100	5 1/2	140	4	102	1 1/2	38

Part	Part Number
2" B x M Threaded Adapter	002020-191-7
3" B x M Threaded Adapter	002030-191-7
4" B x M Threaded Adapter	002040-191-7

<sup>(1)</sup>X dimension is a nominal makeup dimension for layout only. Do not use for assembly dimensions.

#### View of Fitting Illustrations



SC 90° Elbow    SC 45° Elbow    SC Tee    SC Sleeve Coupling    SC Termination Fitting with NPT Tap    SC Termination Fitting without Tap    Sleeve Coupling    Threaded Adapter-BxM

## Crossover 45° Elbow, Crossover Tee, Crossover Nipple

Pipe Size		Crossover 45				Crossover Tee				Crossover Nipple (Overall Length "C")	
		A1		A2		B1		B2		6"	8"
in	mm	in	mm	in	mm	in	mm	in	mm	152 mm	203 mm
3	80	6	152	4 ¾	121	7	178	5 ½	140	†	-
4	100	7 ½	191	5 ½	140	8	203	6 ¾	162	†	-
6	150	-	-	-	-	-	-	-	-	-	†

†Available from stock.

### Crossover 45° Elbow

Part	Part Number
3" 45° SC Crossover	012030-311-3
4" 45° SC Crossover	012040-311-3

### Crossover Tee

Part	Part Number
3" SC Crossover Tee	012030-411-3
4" SC Crossover Tee	012040-411-3

### Crossover Nipple

(Scarf both ends)

Part	Part Number
3" x 6" Crossover Nipple	012030-006-7
4" x 6" Crossover Nipple	012040-006-7
6" x 8" Crossover Nipple	012060-008-7

### Reducer Bushing

(Scarfed O.D.)

Pipe Size		A		X <sup>(1)</sup>	
in	mm	in	mm	in	mm
3 x 2	80 x 50	2 ¼	57	1 ½	38
4 x 3	100 x 80	2 ¾	60	1 ⅞	48

<sup>(1)</sup>X dimension is a nominal makeup dimension for layout only. Do not use for assembly dimensions.

Part	Part Number
3" x 2" Reducer Bushing	012030-231-7
4" x 3" Reducer Bushing	012040-231-7

### Saddle

Pipe Size		A		B		X <sup>(1)</sup>	
in	mm	in	mm	in	mm	in	mm
3 x 2	80 x 50	4	102	6	152	1 ⅜	35
4 x 2	100 x 50	4 ½	114	6	152	1 ⅜	35
4 x 3	100 x 80	5 ¼	133	6	152	1 ⅝	41
3 x 1	80 x 25	3 ½	89	6	152	*	*
3 x 1 ¼	80 x 32	3 ½	89	6	152	*	*
3 x 1 ½	80 x 38	3 ½	89	6	152	*	*
4 x 1	100 x 25	4	102	6	152	*	*
4 x 1 ¼	100 x 30	4	102	6	152	*	*
4 x 1 ½	100 x 40	4	102	6	152	*	*

\* NPT threads.

### Centralizer

Part	Part Number
2" x 3" Centralizer	013020-650-3
3" x 4" Centralizer	013030-651-4
4" x 6" Centralizer	013040-650-6

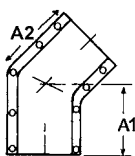
### Belled Outlet

Part	Part Number
3" x 2" Saddle	012030-521-4
4" x 2" Saddle	012040-521-4
4" x 3" Saddle	012040-531-4

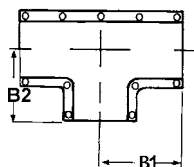
### Female NPT Outlet

Part	Part Number
3" x 1" Saddle	012030-511-4
3" x 1 ¼" Saddle	012030-512-4
3" x 1 ½" Saddle	012030-516-4
4" x 1" Saddle	012040-511-4
4" x 1 ¼" Saddle	012040-512-4
4" x 1 ½" Saddle	012040-516-4

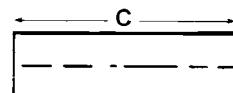
#### View of Fitting Illustrations



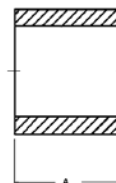
Crossover 45° Elbow



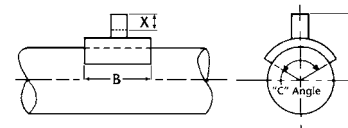
Crossover Tee



Crossover Nipple



Reducer Bushing



Saddle

# Sump Fittings

## Double Wall Bonded Sump Entry/ Termination Fitting

Pipe Size		A		B		C	
in	mm	in	mm	in	mm	in	mm
3 (3 x 2)	80 (80 x 50)	6 7/8	175	4	102	4	102
4 (4 x 3)	100 (100 x 80)	6 7/8	175	4	102	5	127

Part	Part Number
3" Bonded Fitting	012030-626-0
4" Bonded Fitting	012040-626-0

## Double Wall Gasketed Sump Entry/ Termination Fitting

Pipe Size		A		B		C	
in	mm	in	mm	in	mm	in	mm
3 (3 x 2)	80 (80 x 50)	6 7/8	175	4	102	4	102
4 (4 x 3)	100 (100 x 80)	6 7/8	175	4	102	5	127

Part	Part Number
3" Gasketed Fitting	012030-620-0
4" Gasketed Fitting	012040-620-0

## Bonded Sump Entry Fitting

Pipe Size		A		C	
in	mm	in	mm	in	mm
2	50	6	152	2 9/16	65
3	18	6	152	3 3/4	95
4	100	6	152	4 3/4	121
6	150	6	152	6 7/8	175

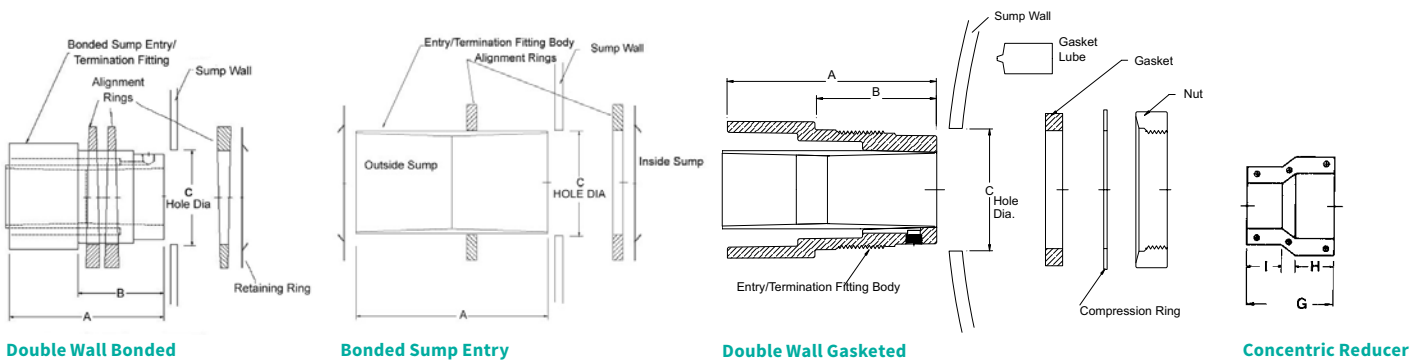
Part	Part Number
2" Bonded Fitting	012020-622-0
3" Bonded Fitting	012030-622-0
4" Bonded Fitting	012040-622-0
6" Bonded Fitting	012060-622-0

## Concentric Reducer

Pipe Size		G ± 1/8		H ± 1/8		I ± 1/8	
in	mm	in	mm	in	mm	in	mm
4 x 3	100 x 80	6	152	2 1/2	64	2 1/2	64
5 x 4	125 x 100	7	178	2 1/2	64	2 1/2	64
6 x 4	150 x 100	7	178	3 1/4	83	2 3/4	70

Part	Part Number
4" x 3" Concentric Reducer	012040-238-3
5" x 4" Concentric Reducer	012050-238-3
6" x 4" Concentric Reducer	012060-238-3

View of Fitting Illustrations



National Oilwell Varco has produced this brochure for general information only, and it is not intended for design purposes. Although every effort has been made to maintain the accuracy and reliability of its contents, National Oilwell Varco in no way assumes responsibility for liability for any loss, damage or injury resulting from the use of information and data herein nor is any warranty expressed or implied. Always cross-reference the bulletin date with the most current version listed at the web site noted in this literature.

**Fiber Glass Systems**

17115 San Pedro Avenue, Ste 200  
San Antonio, Texas 78232 USA  
Phone: 210 477 7500  
Fax: 210 477 7560

© 2016 National Oilwell Varco All Rights Reserved  
FH1250ENG September 2016